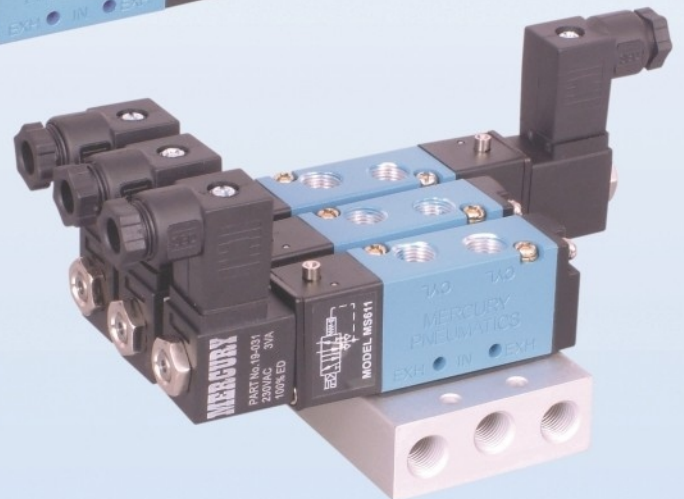
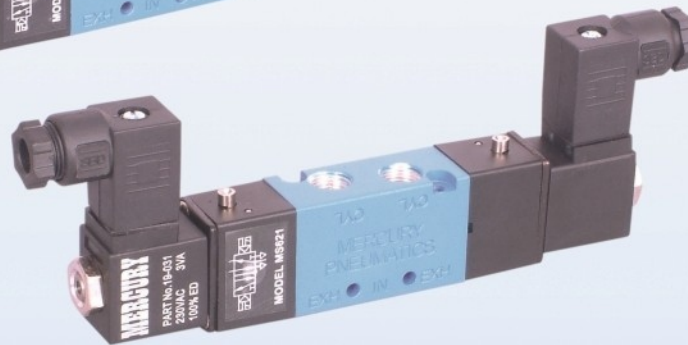
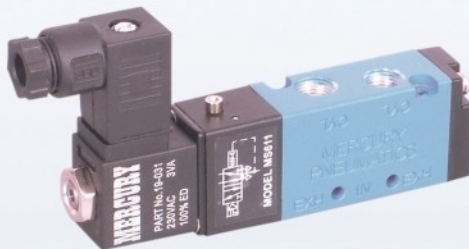




MERCURY

Leadership through innovation

Series "MS" Spool Type Solenoid Valves



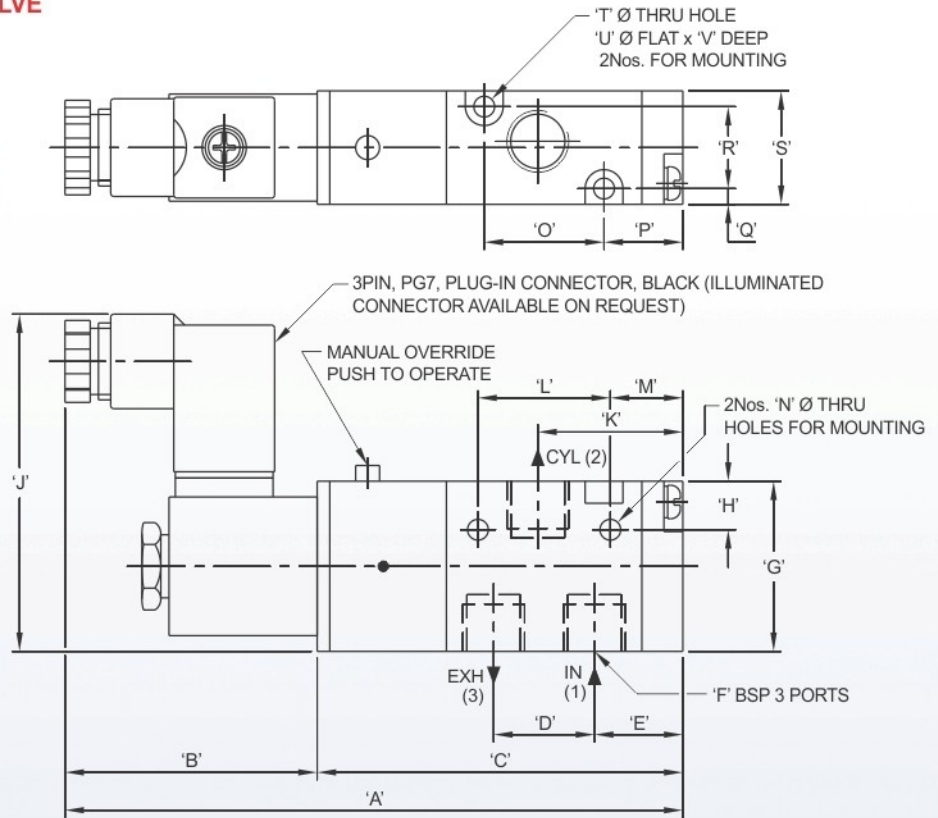
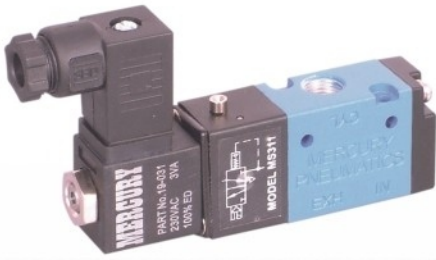
Mercury Pneumatics Pvt. Ltd.

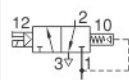
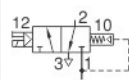
D-134, Ansa Industrial Estate, Saki Vihar Rd, Andheri (E), Mumbai - 400072. India.

Ph.: +91-22-61390390 (10 Lines) Fax: +91-22-28470632

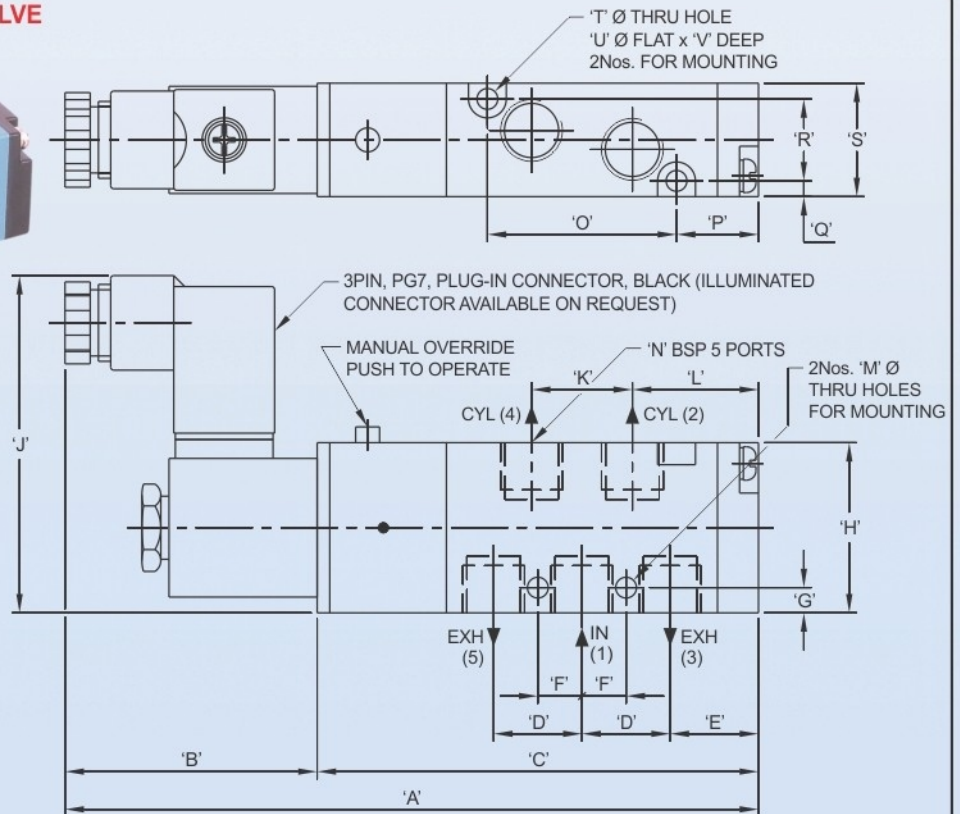
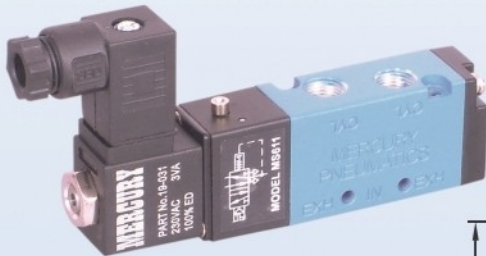
E-mail: mercurypneumatics@vsnl.net Website: www.mercuryindia.net




3/2 (3 WAY) SOLENOID - AIR SPRING VALVE



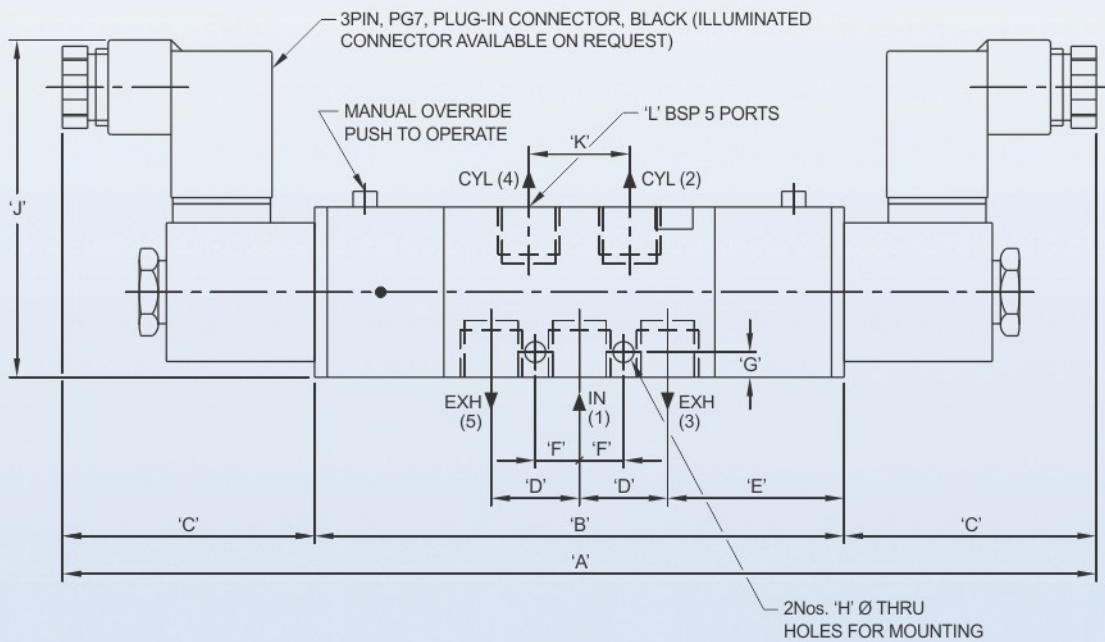
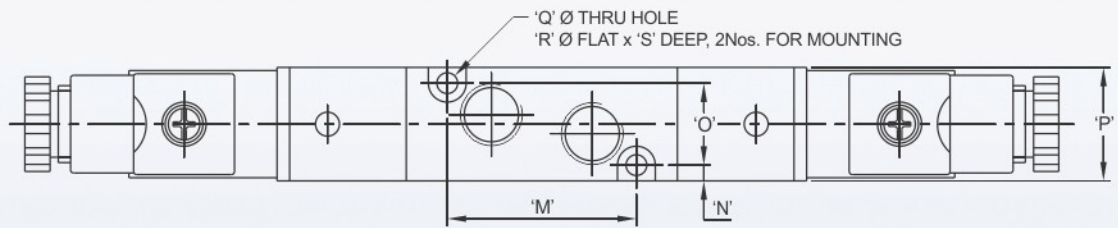
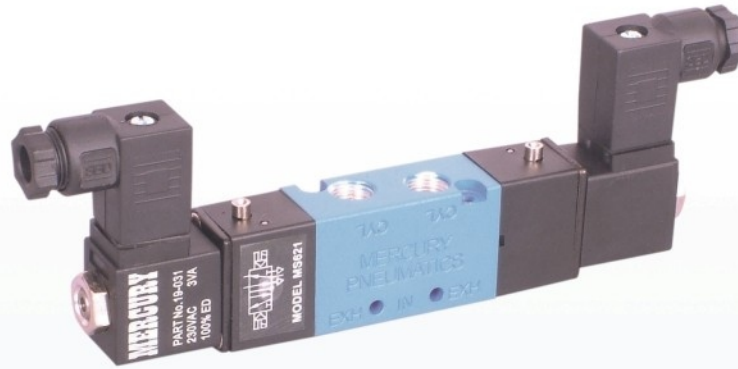
MODEL No.	SIZE	SYMBOL	A	B	C	D	E	F (BSP)	G	H	J	K	L	M	ØN	O	P	Q	R	S	ØT	ØU	V
MS311	1/8"		97.50	38.50	59.00	16.00	14.50	1/8"	27.00	7.50	54.00	21.50	21.00	12.00	3.10	19.00	13.00	2.50	13.00	18.00	3.30	6.00	2.50
MS312	1/4"		133.70	50.00	83.70	22.00	21.50	1/4"	40.00	10.50	68.50	32.50	30.00	17.50	4.30	35.00	15.00	3.50	20.00	27.00	4.30	8.00	4.00
MS314	1/2"		154.00	50.00	104.00	36.00	24.50	1/2"	50.00	13.50	73.50	42.50	48.00	18.50	5.30	48.00	18.50	3.50	27.00	34.00	4.30	8.00	4.00

5/2 (4 WAY) SOLENOID - AIR SPRING VALVE



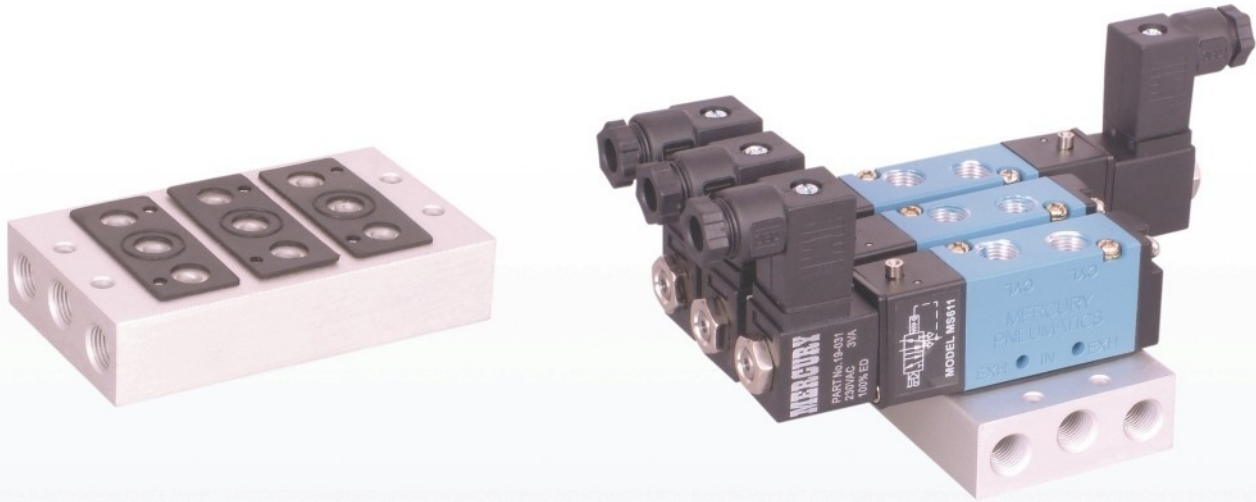
MODEL No.	SIZE	SYMBOL	A	B	C	D	E	F	G	H	J	K	L	ØM	N (BSP)	O	P	Q	R	S	ØT	ØU	V
MS611	1/8"		108.50	38.50	70.00	14.00	14.00	7.00	4.00	27.00	54.00	16.00	20.00	3.30	1/8"	30.00	13.00	2.50	13.00	18.00	3.30	6.00	2.50
MS612	1/4"		148.70	50.00	98.70	22.50	17.50	12.00	6.50	40.00	68.50	24.00	28.00	4.30	1/4"	50.00	15.00	3.50	20.00	27.00	4.30	8.00	4.00
MS614	1/2"		178.00	50.00	128.00	31.50	23.00	14.00	7.50	50.00	73.50	36.00	36.50	5.50	1/2"	72.00	18.50	3.50	27.00	34.00	4.30	8.00	4.00

5/2 (4 WAY 2 POSITION) & 5/3 (4 WAY 3 POSITION) SOLENOID - SOLENOID VALVE

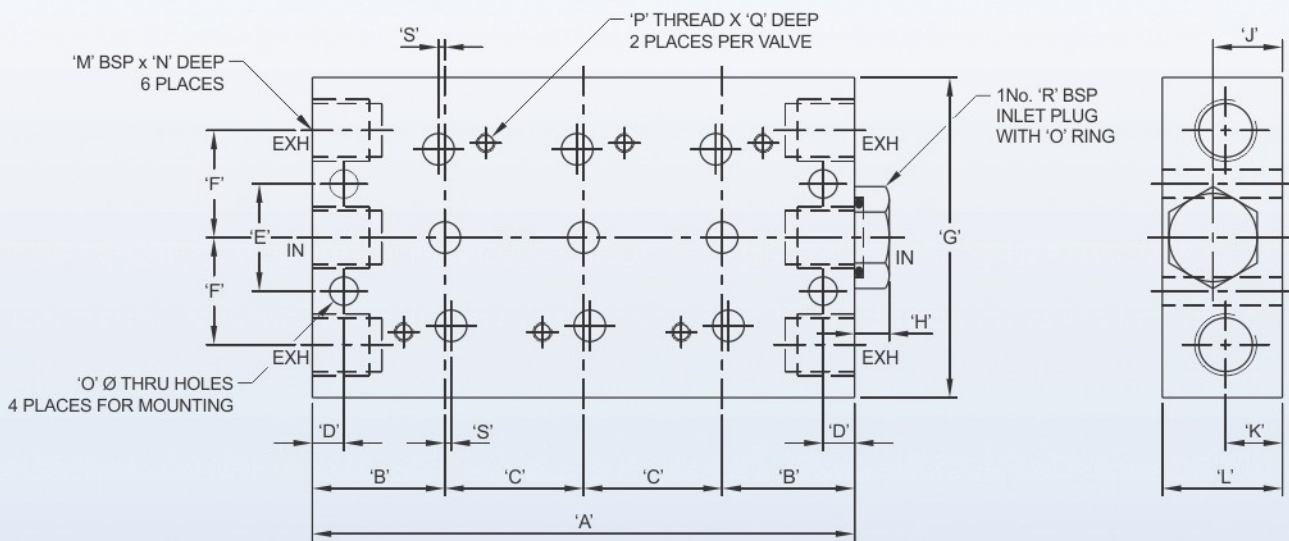


MODEL No.	SIZE	SYMBOL	A	B	C	D	E	F	G	ØH	J	K	L (BSP)	M	N	O	P	ØQ	ØR	S
MS621	1/8"		161.00	84.00	38.50	14.00	28.00	7.00	4.00	3.30	54.00	16.00	1/8"	30.00	2.50	13.00	18.00	3.30	6.00	2.50
MS622	1/4"		217.40	117.40	50.00	22.50	36.20	12.00	6.50	4.30	68.50	24.00	1/4"	50.00	3.50	20.00	27.00	4.30	8.00	4.00
MS624	1/2"		247.00	147.00	50.00	31.50	42.00	14.00	7.50	5.50	73.50	36.00	1/2"	72.00	3.50	27.00	34.00	4.30	8.00	4.00
MS721	1/8"		176.00	99.00	38.50	14.00	43.00	7.00	4.00	3.30	54.00	16.00	1/8"	30.00	2.50	13.00	18.00	3.30	6.00	2.50
MS722	1/4"		236.40	136.40	50.00	22.50	55.20	12.00	6.50	4.30	68.50	24.00	1/4"	50.00	3.50	20.00	27.00	4.30	8.00	4.00
MS724	1/2"		269.00	169.00	50.00	31.50	64.00	14.00	7.50	5.50	73.50	36.00	1/2"	72.00	3.50	27.00	34.00	4.30	8.00	4.00
MS821	1/8"		176.00	99.00	38.50	14.00	43.00	7.00	4.00	3.30	54.00	16.00	1/8"	30.00	2.50	13.00	18.00	3.30	6.00	2.50
MS822	1/4"		236.40	136.40	50.00	22.50	55.20	12.00	6.50	4.30	68.50	24.00	1/4"	50.00	3.50	20.00	27.00	4.30	8.00	4.00
MS824	1/2"		269.00	169.00	50.00	31.50	64.00	14.00	7.50	5.50	73.50	36.00	1/2"	72.00	3.50	27.00	34.00	4.30	8.00	4.00
MS921	1/8"		176.00	99.00	38.50	14.00	43.00	7.00	4.00	3.30	54.00	16.00	1/8"	30.00	2.50	13.00	18.00	3.30	6.00	2.50
MS922	1/4"		236.40	136.40	50.00	22.50	55.20	12.00	6.50	4.30	68.50	24.00	1/4"	50.00	3.50	20.00	27.00	4.30	8.00	4.00
MS924	1/2"		269.00	169.00	50.00	31.50	64.00	14.00	7.50	5.50	73.50	36.00	1/2"	72.00	3.50	27.00	34.00	4.30	8.00	4.00

SUB - BASE MANIFOLD FOR 5/2 & 5/3 VALVES



Note:- Special gang assemblies as per customer's circuit can be designed and supplied.



MODEL No.	SIZE	A	B	C	D	E	F	G	H	J	K	L	M (BSP)	N	ØO	P	Q	R (BSP)	S
MSG1-2	1/8"	64.00, FOR 2 VALVES	21.00	22.00	5.00	17.00	17.00	50.80	5.50	11.00	9.00	19.05	1/8"	9.00	4.50	M3	7.00	1/8"	1.00
MSG1-3		86.00, FOR 3 VALVES																	
MSG1-4		108.00, FOR 4 VALVES																	
MSG1-5		130.00, FOR 5 VALVES																	
MSG1-6		152.00, FOR 6 VALVES																	
MSG1-7		174.00, FOR 7 VALVES																	
MSG1-8		196.00, FOR 8 VALVES																	
MSG2-2		1/4"																	
MSG2-3	108.00, FOR 3 VALVES																		
MSG2-4	137.00, FOR 4 VALVES																		
MSG2-5	166.00, FOR 5 VALVES																		
MSG2-6	195.00, FOR 6 VALVES																		
MSG2-7	224.00, FOR 7 VALVES																		
MSG2-8	253.00, FOR 8 VALVES																		
MSG4-2	1/2"		102.00, FOR 2 VALVES	33.00	36.00	7.00	36.00	36.00	101.60	7.00	22.00	19.00	38.10	1/2"	14.00	6.50	M4	8.00	1/2"
MSG4-3		138.00, FOR 3 VALVES																	
MSG4-4		174.00, FOR 4 VALVES																	
MSG4-5		210.00, FOR 5 VALVES																	
MSG4-6		246.00, FOR 6 VALVES																	
MSG4-7		282.00, FOR 7 VALVES																	
MSG4-8		318.00, FOR 8 VALVES																	