



Quick Exhaust & Shuttle Valves

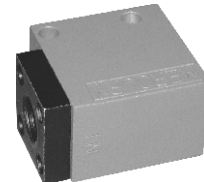
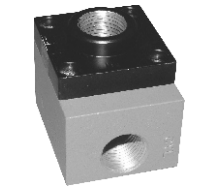


Mechanical Characteristic

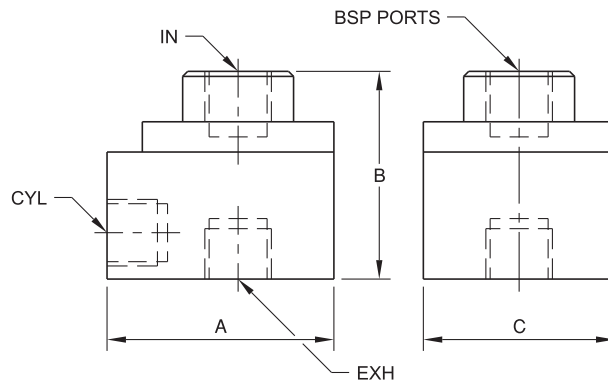
Body	: Aluminium
Orifice	: Refer to technical data
Ports	: BSP Female
Seals	: Nitrile Rubber
Design	: Poppet type
Weight	: Refer to technical data

Operating Conditions

Media	: Compressed Air
Temperature Range	: +5° to +50°C
Pressure Range	: 0 to 10 bar
Leakage	: Bubble Tight
Flow (NLPM) at 5 bar	: Refer to technical data



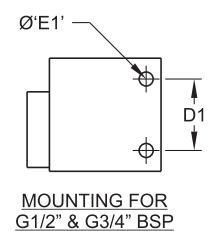
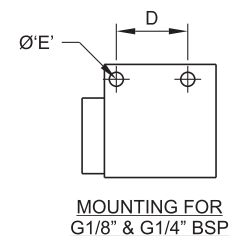
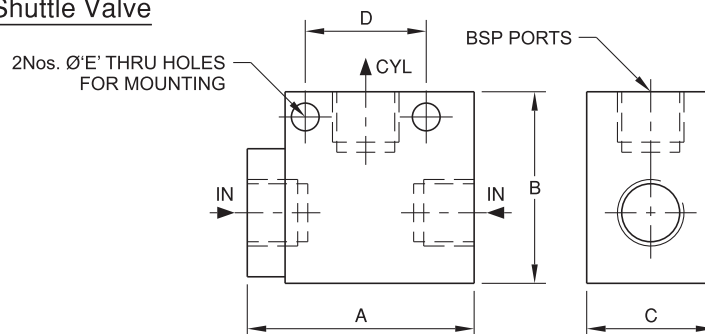
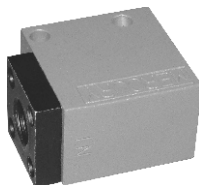
1/4", 1/2" & 3/4" BSP Quick Exhaust Valve



MODEL No.	SIZE BSP	ORIFICE		SYMBOL	A	B	C	FLOW		WEIGHT (Kg.)	SEAL KIT No.
		IN → CYL	CYL → EXH					IN → CYL	CYL → EXH		
Q2	1/4"	Ø6.50	Ø8.00		45.00	41.20	38.00	1200	1600	0.13	SKQ2
Q4	1/2"	Ø12.50	Ø15.00		62.00	55.00	50.80	3600	5000	0.31	SKQ4
Q5	3/4"	Ø19.00	Ø22.00		76.20	88.00	50.80	8000	12000	0.53	SKQ5

Note :- 1) For best performance Quick Exhaust valve should be fitted directly on the cylinder port.
 2) 1/4" and 1/2" BSP Quick Exhaust valves can also be used as Shuttle valves.

1/8", 1/4", 1/2" & 3/4" BSP Shuttle Valve



MODEL No.	SIZE BSP	ORIFICE (mm)	SYMBOL	A	B	C	D	D1	ØE	ØE1	FLOW NLPM	WEIGHT (Kg.)	SEAL KIT No.
S1	1/8"	Ø3.50		38.40	25.40	19.00	18.00	-	3.50	-	250	0.05	SKS1
S2	1/4"	Ø6.50		45.00	38.00	25.40	24.00	-	5.50	-	1100	0.09	SKS2
S4	1/2"	Ø12.50		68.00	61.00	38.10	-	45.00	-	6.50	3000	0.33	SKS4
S5	3/4"	Ø19.00		67.30	68.00	50.80	-	55.00	-	6.50	7000	0.45	SKS5